



ALKUSARI S T O N E

Photo: Mareuil, Limestone, Honed Finish, Various Sizes
All Rights Reserved ©2024 Alkusari Stone

MAREUIL

PRINCIPAL STONES | LIMESTONE MRL

SEPTEMBER 2024

ALKUSARI S T O N E

www.alkusaristone.com

MAIN OFFICE

4117 East State Highway 29
Bertram, Texas 78605

ph 512.339.2299

SALES

houston@alkusaristone.com
austin@alkusaristone.com

MAREUIL

PRINCIPAL STONES | LIMESTONE MRL

SIZES

SQUARE
3/4" THICKNESS

18" x 18"
24" x 24"
32" x 32"
36" x 36"
48" x 48"

RECTANGLE
3/4" THICKNESS

12" x 24"
18" x 36"
24" x 36"
24" x 48"

SLABS

THICKNESS

3/4"
1 1/4"
2"

PRIMARY FLOOR PATTERNS

SEE FOLLOWING PAGE

Please contact us if you require additional custom sizes and thicknesses for your project. As the source and manufacturer, we are capable of providing bespoke material to our customers.



Honed Finish

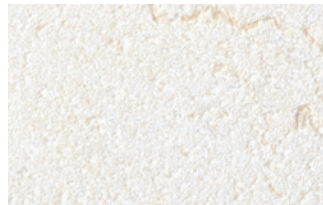
FINISHES



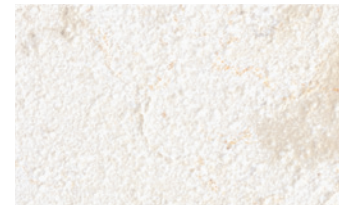
Honed HN



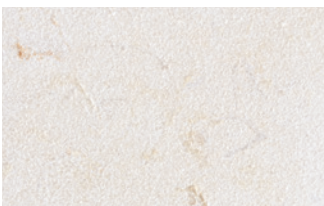
Matte MT



Chateau CH



Aged AG



Dune DN



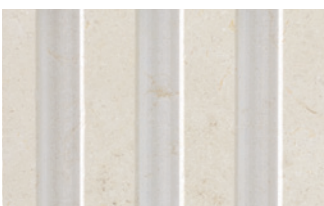
Buchard BC



Charue 1 C1



Ratisse RT



Slat Panel SP



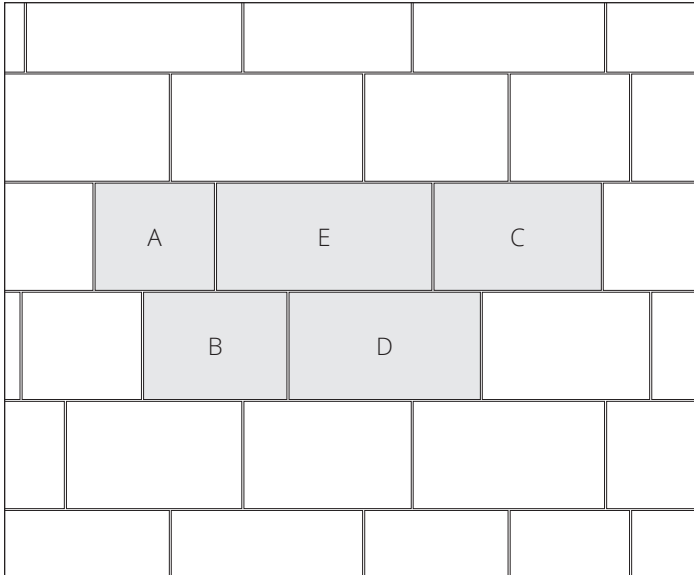
Fluted FT

MAREUIL

PRINCIPAL STONES | LIMESTONE MRL

PRIMARY FLOOR PATTERNS

3/4" THICKNESS



Lineare Set-Length Pattern LSLP

ONE COMPLETE PATTERN EQUALS 17 1/2 SQ/FT

- A (1 pc) 18" X 20"
- B (1 pc) 18" X 24"
- C (1 pc) 18" X 28"
- D (1 pc) 18" X 32"
- E (1 pc) 18" X 36"

MAREUIL

PRINCIPAL STONES | LIMESTONE MRL

SEPTEMBER 2024

TECHNICAL INFORMATION

	LOW	MEDIUM	HIGH
ABRASION RESISTANCE			
ABSORPTION			
COMPRESSION STRENGTH			
DENSITY			

APPLICATION

RESIDENTIAL

Interior Floor & Wall; Exterior Floor & Wall

COMMERCIAL

Interior Floor & Wall; Exterior Floor & Wall

INSTALLATION & SEALING

Install per stone industry standards. Dry layout material prior to installation to properly blend color. Always seal the stone prior to grouting or use. Choose a grout color that is similar to the color of the stone to avoid picture frame effect.

CARE & MAINTENANCE

Use only non-abrasive/non-acidic cleaners to avoid etching and scratching. Periodic cleaning with water and natural soap is recommended.

ORDERING SAMPLES

Complimentary samples are available by contacting one of our locations. Customers only pay for shipping. Sample dimensions are 4" X 4" and available in multiple finishes listed on the second page.

PRODUCT CODES

Our Product Codes are created according to this formula:

[Principal Stone Code]-[Finish Code]-[Height and Width, or Pattern Code]-[Thickness]

So, a piece of Mareuil, with a Chateau Finish, and measuring 18" x 36" x 3/4" would have the following Product Code:

MRL-CH-1836-34